

Latsch / Laces – Latsch

Modern, high-quality three-room penthouse apartment in Latsch

Property ID: IT254152438



www.von-poll.it

PURCHASE PRICE: 540.000 EUR • ROOMS: 3

Property ID: IT254152438 - 39021 Latsch / Laces – Latsch

- At a glance
- The property
- Energy Data
- Floor plans
- A first impression
- Contact partner

Property ID: IT254152438 - 39021 Latsch / Laces – Latsch

At a glance

Property ID	IT254152438
Floor	2
Rooms	3
Bedrooms	2
Bathrooms	2
Year of construction	2025
Type of parking	2 x Underground car park, 30000 EUR (Sale)

Purchase Price	540.000 EUR
Commission	Subject to commission
Total Space	ca. 137 m ²
Usable Space	ca. 97 m ²

Property ID: IT254152438 - 39021 Latsch / Laces – Latsch

Energy Data

Type of heating	District heating
Energy Source	Remote
Energy certificate valid until	02.07.2035

Energy Certificate	Energy demand certificate
Final Energy Demand	23.00 kWh/m²a
Energy efficiency class	A
Year of construction according to energy certificate	2025

Property ID: IT254152438 - 39021 Latsch / Laces – Latsch

The property



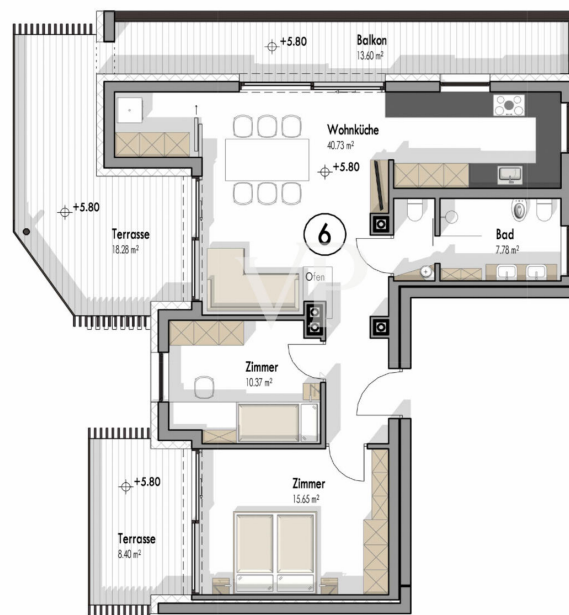
Property ID: IT254152438 - 39021 Latsch / Laces – Latsch

The property



Property ID: IT254152438 - 39021 Latsch / Laces – Latsch

Floor plans



This floor plan is not to scale. The documents were given to us by the client. For this reason, we cannot guarantee the accuracy of the information.

Property ID: IT254152438 - 39021 Latsch / Laces – Latsch

A first impression

This high-quality apartment, located on the top floor of the "Moos" apartment complex in Latsch, was built according to the KlimaHaus A energy efficiency standard. There are only seven residential units in the apartment building. It impresses with its solid construction and furnishings with attention to the smallest details.

The technical equipment meets current standards: The KMX system enables centralized control of heating, lighting, and shading. A modern video intercom system and fiber optic connection are also available. In bathrooms, recessed spotlights with stainless steel looks provide focused and pleasant lighting.

Heating is underfloor, fed by local district heating, with individual control in each room. Sanitary fixtures include white ceramic elements (washbasin, toilet, bidet), high-quality faucets from Hansgrohe, and floor-level glass showers with channel drain. Inside, flush-floor doors made of oiled and cross-paneled oak emphasize the natural, modern ambience.

Windows and sliding doors are aluminum and triple-glazed. Bronze-colored exterior blinds and roller shades provide effective sun protection and blend harmoniously into the overall architectural concept.

In the living area, oak wood flooring with flush transitions was laid, while large-format porcelain tiles were used in the bathrooms, kitchen, and living and dining areas. The terrace areas also feature large-format, durable stoneware tiles.

The apartment can be delivered with a high-quality kitchen and TV cabinet at an additional cost; it is not conventionally furnished and is therefore also ideal as a vacation home.

Property ID: IT254152438 - 39021 Latsch / Laces – Latsch

Contact partner

For further information, please contact your contact person:

Christian Weissensteiner

Drususallee 265/Viale Druso 265, 39100 Bozen/Bolzano (BZ)

Tel.: +39 0471 20 90 20

E-Mail: bozen@von-poll.com

To the Disclaimer of von Poll Immobilien GmbH

www.von-poll.com