

Palma

Luxurious refurbished flat in a building located on the seafront promenade of Palma de Mallorca.

????????? ??????????: ES213165



???? ??????: 720.000 EUR • ??????????: ca. 120 m²

???????? ??????????: ES213165 - 07015 Palma

- ☐ ?? ??? ??????
- ☐ ?? ??????????
- ☐ ??? ?????? ???????????
- ☐ ??? ??? ??? ?????????????
- ☐ ?????????????? ???????????????

??????? ?????????: ES213165 - 07015 Palma

?? ??? ??????

???????? ?????????	ES213165	???? ?????	720.000 EUR
??????????	ca. 120 m²	??????????	??????
??????	2	????????????????????	ca. 120 m²
?????????? ??	2	?????	
??????????		??????	?????
??????????	2		
???? ???????????	1990		
????? ???????????	1 x ???????		
	?????????		

???????? ?????: ES213165 - 07015 Palma

?? ???????



???????? ?????: ES213165 - 07015 Palma

?? ???????



????????? ??????????: ES213165 - 07015 Palma

?? ?????????



???????? ?????: ES213165 - 07015 Palma

?? ???????



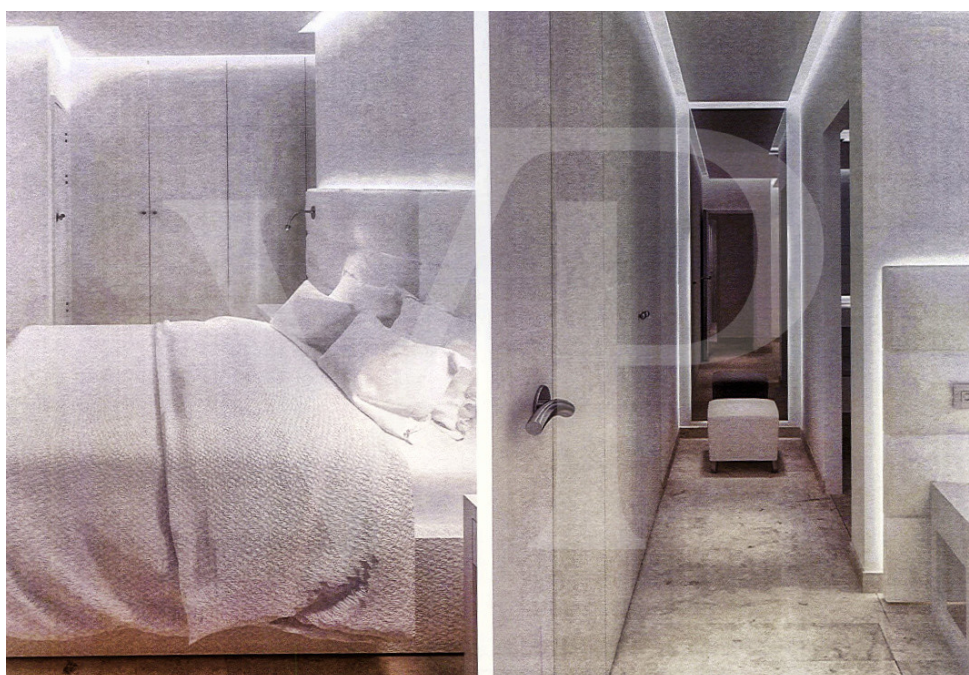
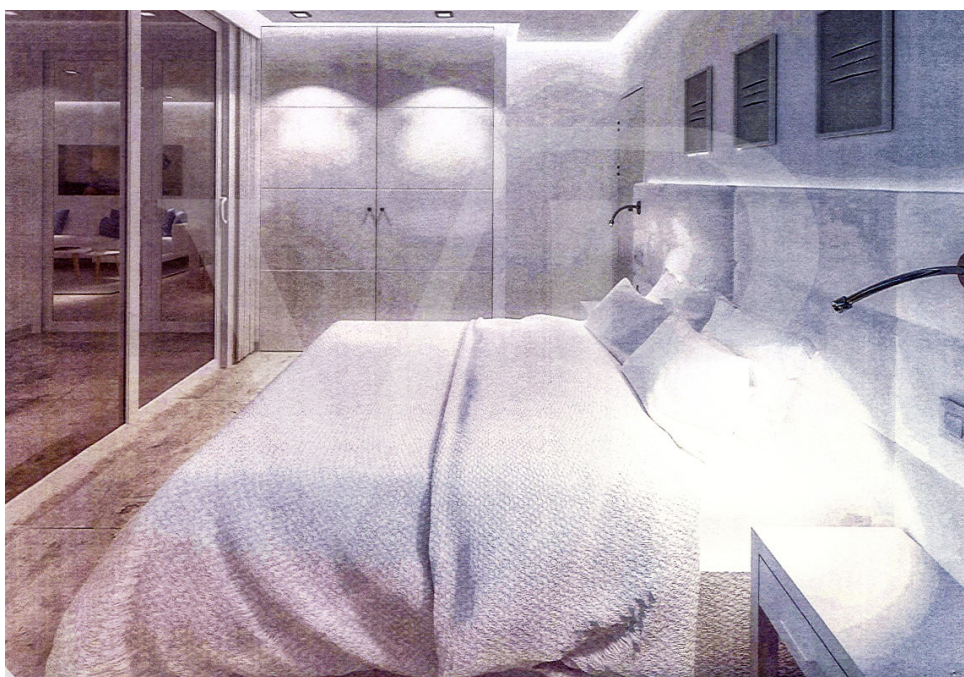
???????? ?????????: ES213165 - 07015 Palma

?? ????????



???????? ?????????: ES213165 - 07015 Palma

?? ????????



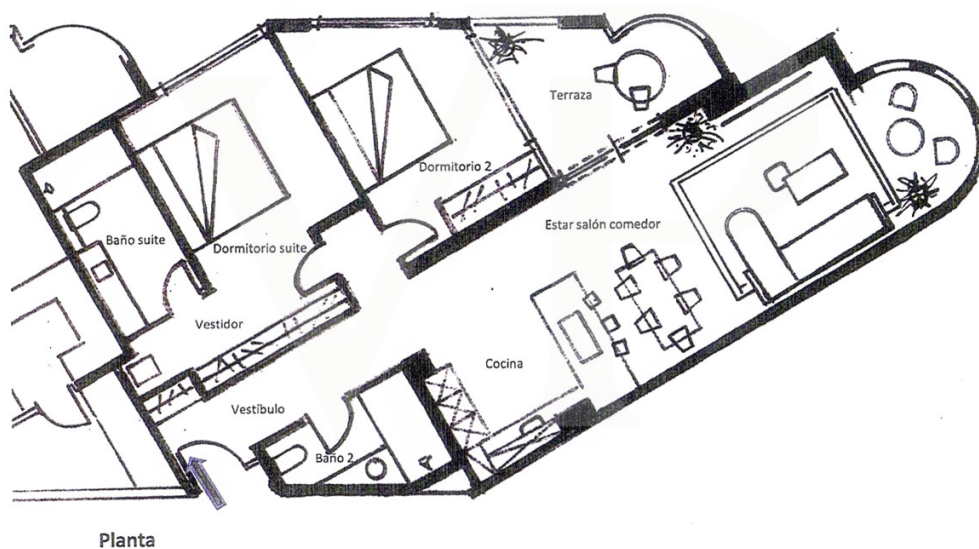
??????? ???????: ES213165 - 07015 Palma

?? ????????



???????? ?????: ES213165 - 07015 Palma

?? ????????



??????? ???????: ES213165 - 07015 Palma

?? ????????



??????? ???????: ES213165 - 07015 Palma

?? ????????



??????? ???????: ES213165 - 07015 Palma

?? ????????



??????? ???????: ES213165 - 07015 Palma

??? ?????? ??????????

For sale this luxurious flat in complete refurbishment in a fantastic building located in the first line of the promenade of Palma de Mallorca.

Distributed on one floor with large entrance hall, complete bathroom with bathtub. All this diaphanous area integrates the modern kitchen with large peninsula open to the dining room, lots of storage area, living room and fabulous relaxation corner or office with fantastic large windows overlooking the promenade, from where you can see the sea and the spectacular Cathedral of Palma.

Spacious double bedroom with dressing room and bathroom with bathtub en suite, a second double bedroom with direct access to a fantastic terrace from where you can also enjoy beautiful views.

The large building has parking space and communal storage room in the underground floor of the building, video entry phone. Large children's playground and gardens next to the building.

Possibility of choosing several options in the designs, according to tastes and needs.

??????? ???????: ES213165 - 07015 Palma

??? ??? ??? ??????????

Property located in the maritime nerve centre of the Bay of Palma, close to the Club de Mar-Mallorca, the Port of Palma, Darsena de can barbará marina and Marina Port De Mallorca, the Oceanographic Centre of the Balearic Islands - Spanish Institute of Oceanography, Escola de Formació Professional Nauticopesquera de Palma, a few metres from the Marivent Palace, Club de Mar-Mallorca.

???????? ??????????: ES213165 - 07015 Palma

????????????? ????????????????

??? ?????????????? ??????????????, ?????????????? ?? ?? ?????????? ?????????????? ???:

Christian W. Czarnetzki

C./Cecilio Metelo 67, E-07460 Pollensa

Tel.: +34 971 530 088

E-Mail: pollensa@von-poll.com

???? ?????????? ????????? ??? von Poll Immobilien GmbH

www.von-poll.com